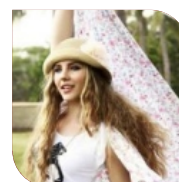


AMPA®

www.ampaworld.com
Twin-tub Washing Machine



ASW900



PACKING DIMENSION(mm):830X515X900
loading capacity :168pcs

Rate Capacity (kg)
Wash:9.0 Spin:5.2
Rate Power(w):
Wash:450 Spin:150
Net Weight (kg):23

Special Features

Fashionable design, elegance
Knob shield protected
Tempered glass cover
Combined wave wheel design
Hand-rubbed water flow
Plastic body
Two water inlets
Full plastic crust, double layers cabinet
The base be specially designed to avoid rat
Mobile casters



ASW100



PACKING DIMENSION(mm):890X540X1030
loading capacity :140pcs

Rate Capacity (kg)
Wash:10.0 Spin:6.0
Rate Power(w):
Wash:500 Spin:180
Net Weight (kg):24

Special Features

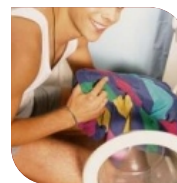
Fashionable design, elegance
Combined wave wheel design
Two water inlets
Hand-rubbed water flow
Full plastic crust, double layers cabinet
The base be specially designed to avoid rat
Mobile casters

& AUTOMATIC
TWIN-TUB



AMPA®

www.ampaworld.com
Twin-tub Washing Machine



ASW950



PACKING DIMENSION(mm):830X515X925
loading capacity :158pcs

Rate Capacity (kg)
Wash:9.5 Spin:5.2
Rate Power(w):
Wash:450 Spin:150
Net Weight (kg):23

Special Features

Fashionable design, elegance
Knob shield protected
Tempered glass cover
Transparent cover for option
Combined wave wheel design
Hand-rubbed water flow
Plastic body
Two water inlets
Full plastic crust, double layers cabinet
The base be specially designed to avoid rat
Mobile casters



ASW800

PACKING DIMENSION(mm):800X465X910
loading capacity :212pcs

Rated Capacity (kg):
Wash: 8.0 Spin: 5.2
Rated Power (w):
Wash: 450 Spin: 150
Net Weight (kg):20

Special Features

Fashionable design, elegance
Combined wave wheel design
Hand-rubbed water flow
Plastic body
Two water inlets
The base be specially designed to avoid rat
Mobile casters